



TRESU is a highly specialized company offering flexoprinting machines and ancillary products and concepts for flexo, digital and offset printing as well as customer service and technical support.

TRESU has 40 years of experience and expertise in the development, production and maintenance of engineered solutions and supplies directly to end-customers, OEMs and partners worldwide.

TRESU has production facilities in Denmark and sales companies in USA, Germany, Italy, Japan and China as well as an international agency network providing local support and know-how.

TRESU A/S
DK-6000 Kolding
DENMARK
+45 7632 3500

TRESU Americas
Grapevine, TX 76051
USA
+1 214 631 2844

TRESU GmbH
D-31157 Sartstedt
GERMANY
+49 5066 9174286

TRESU Italia s.r.l
I-20024 Garbagnate Milanese (MI)
ITALY
+39 0296 59 202

TRESU Japan Co., Ltd.
559-0033 Osaka
JAPAN
+81 6 4703 060

TRESU China
100062 Beijing
CHINA
+86 (0) 10 65911628

Partnership Performance

Serving the printing industry for more than 40 years – Ready for the next 40



Venusvej 44 | DK-6000 Kolding | Denmark
Tel.: +45 76 32 35 00 | tresu@tresu.com



Sign up on [tresu.com](https://www.tresu.com) and stay connected
www.tresu.com

TRESU – Partnership Performance

TRESU is a highly specialized company offering inline flexo printing and coating machines, ancillary equipment and concepts for flexo, digital and offset printing as well as customer service and technical support.

With more than 40 years of experience in the development, production and maintenance of engineered flexo printing technology, TRESU supplies proven solutions directly to leading converters and brand owners, OEMs and partners worldwide. – either integrated inline or as stand-alone solutions.

TRESU is headquartered in Kolding, Denmark and is part of the Altor private equity group.



Stephan Plenz, CEO: “Our vision is to be the leading flexo technology lifecycle partner driving sustainable growth.”



We understand that new sustainable ways of printing are changing customers’ value chains. Reducing carbon footprint does not come in a box, and our commitment to provide future solutions is yet another step that we are taking.

TRESU has joined the Science Based Target initiative SBTi to ensure that our climate actions to reduce carbon emissions are in line with the latest science.

Seamless integration of flexo technology

TRESU products are designed by us - from the inside and out. We know every part of our equipment and machines. We design and engineer the core technology of all our products ourselves and offer a full range of custom-built precision-engineered chamber doctor blade systems meeting the specific requirements of both OEM machine manufacturers, print companies as well as individual customers worldwide.

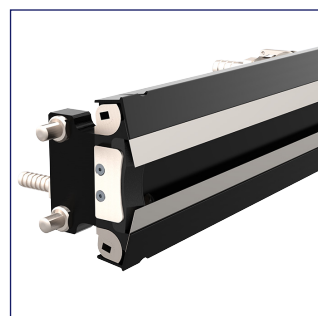
Engineered around proven technologies – and with swift and agile product development and OEM customizations - we understand the commitment and demands in this industry.

Applying coating as clear as glass at the push of a button is a key feature of the TRESU Pressure Control Technology – a concept based on genuine TRESU circulators, chamber doctor blade systems and end-seals.

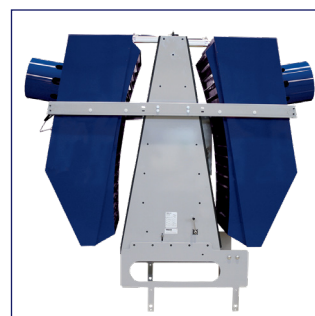
To us quality and performance are not just buzz words – they are the very foundation of TRESU’s flexo technology - and integrated in every single component from us.



Ink- and coating supply systems



Chamber doctor blade systems



Hot-air drying systems and units
TRESU VelociDryer™

Automated printing and coating performance

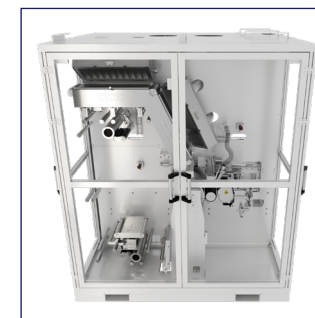


Largest installed base of inline flexo printing units world-wide. TRESU Flexo Innovator: 67” and 2,600 ft/min (800 m/min)

Based on the heritage from 40 years of proven performance and with built-in know-how from the largest installed base of flexo units installed at leading converters and brand owners all over the world, TRESU offers a range of proven automated printing presses and coating units.

We believe automation is key to performance and we can optimize, innovate, and simplify customers’ printing and coating processes. Whether multi-station inline integration or stand-alone units, customers experience significant waste reductions – no matter who operates the system.

With TRESU Flexo Innovator Dual ink Deck automated job changes significantly improve flexibility and reduce waste.



Goodbye to preprinted nonwovens at 1,300 ft/min (400m/min): TRESU CI Flexo Press



Inline or stand-alone coaters or units TRESU iCoat II: Up to 4,600 sheets/hr

Key to our printing and coating capabilities is the VelociDryer technology, enabling printing and full-face coating speeds up to 2,600 ft/min - 800 m/min.

Tests in our DemoCenter show that single pass WB coating with grease barrier performance can replace PE-based laminates with VelociDryer technology.

Extending performance

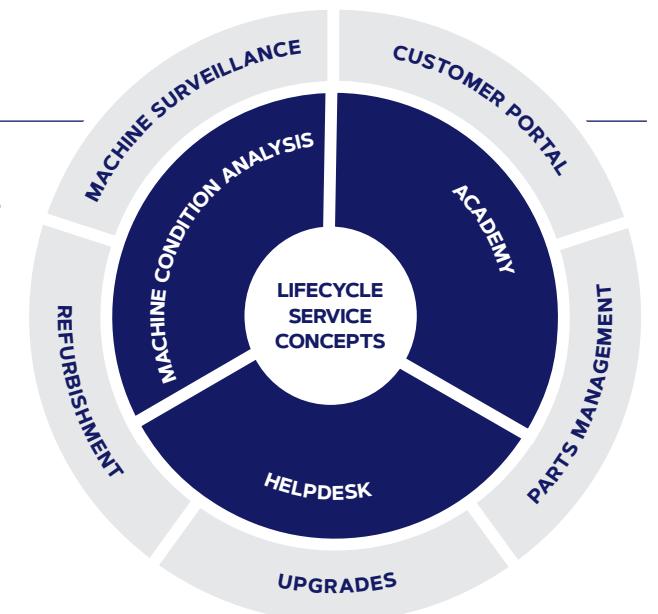
Extending the lifecycle performance of customers’ equipment, we offer a modular service concept called TRESU Customer Care.

We put together individual service agreements based on customer needs optimizing their Overall Equipment Effectiveness (OEE) throughout the entire product lifecycle.

With TRESU Servitization, customers do not buy equipment - but get quality doctoring performance at a fixed transparent fee.

Their goal is our goal – uninterrupted uptime.

We call it: Extending Performance.



TRESU Customer Care 360° modular service concept



TRESU genuine spare parts



TRESU Helpdesk



TRESU SmartEye



TRESU Academy