

TRESU F1 Basic

Ink and coating supply



TRESU F1 Basic is a simple but efficient ink and coating supply circulator used for all CI-, stack- and inline printing and coating machines – integrated or as a stand alone unit.

The F1 Basic ink and coating supply is available in different versions to meet specific demands in different applications.

- For TRESU Flexi- and UniPrint chamber doctor blade systems
- Basic ink and coating supply system*
- Manually handled flow wash cleaning procedure
- Stand alone/integrated ink supply
- OEM customized or retrofitted
- Easy to install and maintain
- For flexo printing applications, water/solvent and UV based inks

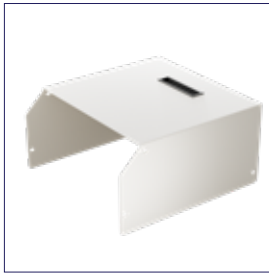
* With pneumatic controlled diaphragm pump technology.

TRESU F1 Basic

Ink and coating supply



Pulsation damper



Lid with handle



Filter regulator



Inline filter



Hose or lance set

TECHNICAL SPECIFICATIONS

Height	635 mm (incl. legs)
Width	385 mm (incl. legs)
Depth	418 mm (incl. legs)
Supply air (Pneumatic)	Min. 6 bar – max 8 bar, clean and dry 87 – 116 psi
Air consumption	60 L/min
Ink/Coatings	Water, UV based or solvent based - depending on pump type and hoses
TRESU Pressure Control Technology	No
Washing media supply	0.5 - 1 bar 7 – 14 psi
Flow	Adjustable manually as stand alone
Options	Lid Pulsation damper Filter regulator Cleaning system Lances or hoses Inline filter

TRESU F1 Basic

TRESU F1 Basic ink and coating supply can be used for all CI-, stack- and inline or stand-alone machines – integrated or as a stand-alone unit. 100% pneumatic control.