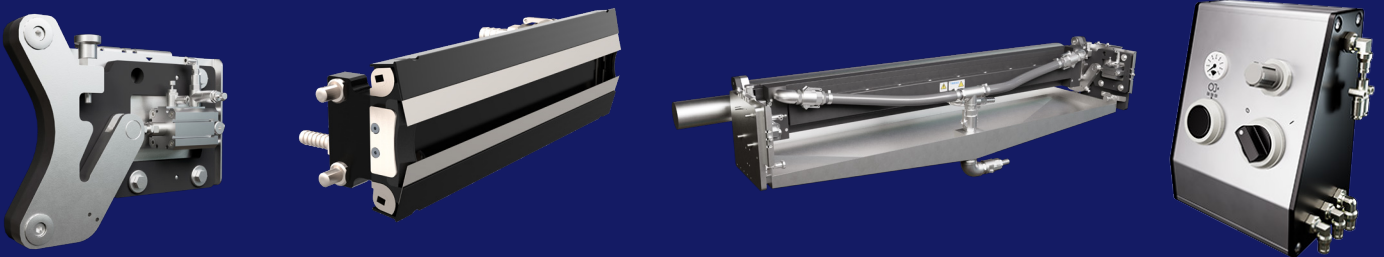


TRESU

TRESU UniPrint Easy

Automatic floating suspension adjusting contact pressure

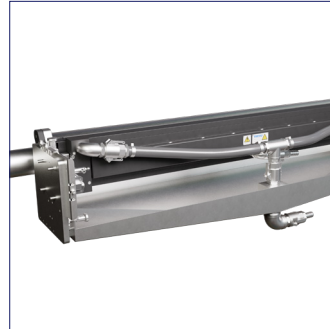
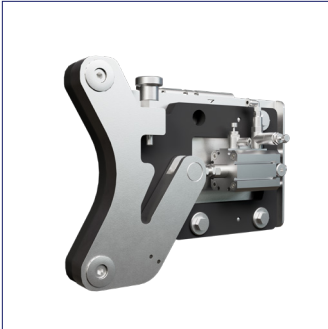


Remote positioning of chamber positions with automatic adjustment of optimal contact pressure adapting to blade wear

- Floating suspension continuously adapting to the wear and tear of the individual blades and chambers
- Remote control and automatic positioning of multiple chamber systems
- Compact and robust pneumatic design with excellent price-performance ratio and low Cost-to-Print
- Side suspension allowing easy access for fast anilox inspection, maintenance and cleaning
- Flexible system upgrades available as retrofit or as an integrated built-in OEM solution
- Genuine TRESU engineered solution guaranteeing authentic quality
- WB, UV, solvent based inks and coatings

TRESU UniPrint Easy

Automated Positioning of Chamber Doctor Blade Systems



TECHNICAL SPECIFICATIONS

Anilox width	From 100 up to 1,600 mm (4" - 63").
Anilox diameter	From 60 to 400 mm (2" - 15").
Speed	Up to 350 m/min (1,150 ft/min)
Print mode	Conventional flow control. TRESU pressure control technology.
Clamping	E-Line quick clamping solution or optional S-Line screw clamping solution.
Design	High quality doctoring for perfect printing and coating with the TRESU Easy Loc mechanical loading system. To be adapted to all TRESU ink and coating systems as well as systems from other OEM machine manufacturers.
Materials and surface	Aluminum, hard anodized, HA-S (pH 4.5 - 9). Teflon, coated (pH 4.5 - 9.5). Ceraflex ceramic coated (pH 2.5 - 12)
Ink/coatings	WB, UV or solvent based inks and coatings.

TRESU UniPrint Easy Chamber Doctor Blade System

Clamping system

Eccentric E-Line change mechanism ensures even and precise blade clamping with rapid and easy action - up to 1,600 mm (63").

Ink and coating circulation:

High uniform print quality and stable production can be achieved in combination with TRESU pressure controlled pumping systems.

Surface and materials:

Aluminum with hard anodized surface (HA-S) treatment is recommended for most applications.

Aluminum with ceramic (TRESU CFX) coated surface is used for aggressive ink, coating or detergent.

Genuine TRESU end seals ensure correct sealing in various applications

Other: Prepared for ATEX.