

The importance of flow control and easy handling - case story from one of the world's largest manufacturers of paper and packaging.

VISY in Australia is a global leader in the packaging, paper and resource recovery industries, providing high quality, innovative and sustainable packaging products and solutions.

VISY Board has been supplying packaging for more than 70 years and with more than 100 locations all over Australia and Asia the company produces more than 858.000 tons of board each year.

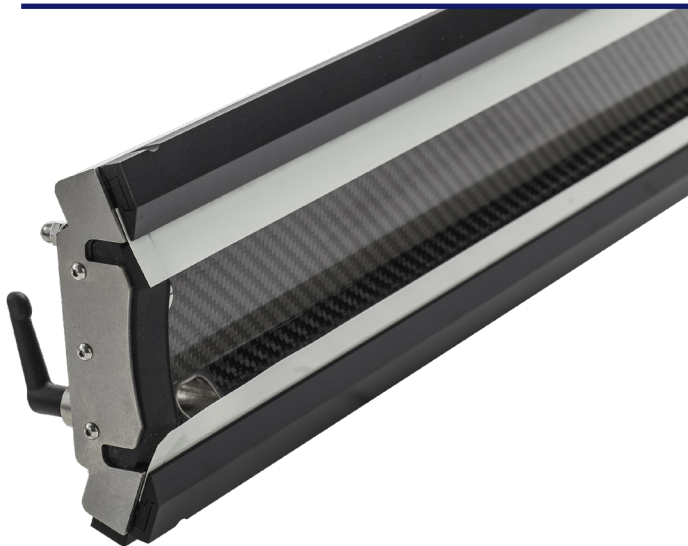
With sustainability at the center of VISY's operating business model, the company recycles more than 1.8 million tons of paper and cardboard yearly.

Dave Manning - an experienced and passionate printing machinist - works at VISY's board factory in Dandenong, Victoria as High-Quality Print Manager.

"Currently using TRESU P-Line Carbon Fiber Chambers 2860mm wide and with Polyester Blades. Amazing Results."

Dave Manning, High Quality Print Manager, VISY Board, Australia.

Dave has more than 30 years of comprehensive experience working for VISY and covering a range of processes including both die-cut operations, prepress management at Visy Pre-Print and now High Quality Fibre board manufacturing at VISY Board's factory in Dandenong and Truganina Victoria, which is Visy Board's new state-of-the-art corrugated factory. TRESUs P-Line Carbon Fiber Chambers meet his expectations for high performance gear.



TRESU's proven lightweight carbon chamber doctor blade systems offer great flow control and easy handling.

The ink repellent surface offers extra protection against ink and detergents with high or low pH values and the performance improving geometry of the curved inner surface means optimized distribution, volume and control discharge of ink and coating - as well as easier cleaning. TRESU offers 6,000mm wide carbon chambers for almost all printing and coating applications.

TRESU chamber doctor blade systems offer the industry's fastest job change and genuine end seals keep the ink where it should be.

Combined with TRESU ink and coating supply systems, then operators will. experience an extremely efficient control of the process throughout the circuit - from the bucket to the anilox roller.