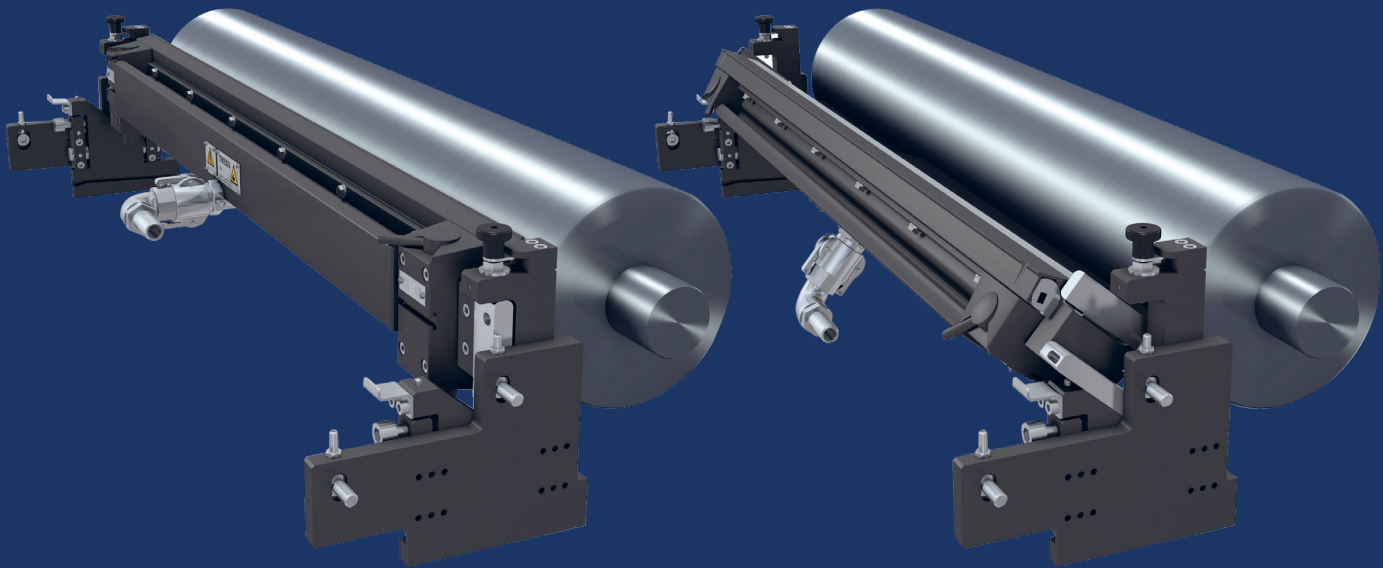


TRESU

TRESU FlexiPrint Basic

Competitive Chamber Doctor Blade System



Basic competitive, efficient and compact chamber design

- Mechanical chamber positioning
- Standardized, compact design with excellent price-performance ratio and low Cost-to-Print (CTP)
- Patented TRESU E-Line clamping system with the fastest change of doctor blades and effective quality doctoring
- Patented TRESU end seals guaranteeing authentic quality
- WB, UV, solvent based inks and coatings



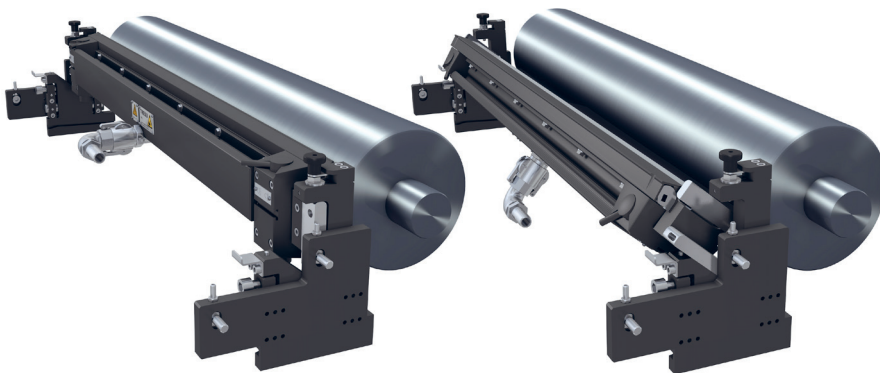
Meet TRESU at Hall 10B41

www.tresu.com - Sign up and stay connected



TRESU FlexiPrint

Basic Competitive Chamber Doctor Blade System



TECHNICAL SPECIFICATIONS

Anilox width	From 80 up to 2.000 mm (3"- 78").
Anilox diameter	From 60 – 400 mm (2" – 15").
Speed	Up to 350 m/min (1,140 ft/min).
Print mode	Flow- and pressure mode.
Clamping	E-Line quick clamping solutions or S-Line screw clamping solutions.
Design	High quality doctoring for perfect printing and coating with the TRESU Easy Loc mechanical loading system. To be adapted to all TRESU ink and coating systems as well as systems from other OEM machine manufacturers.
Materials and surface	Aluminum with HA-S or Ceraflex or as carbon fiber material (CFC).
Ink/coatings	WB, UV or solvent based inks and coatings.

TRESU FlexiPrint Chamber Doctor Blade System with patented genuine TRESU seals ensure perfect sealing.

Clamping system

E-Line: Eccentric, quick clamping solution for chamber widths up to 2.000 mm (78").

Option:

S-Line: Screw clamping solution for special coatings and glue.

Ink and coating circulation:

Open flow circulation or pressure controlled ink/coating circulation with manual or closed loop control system, multiple in- and outlets.

Surface and materials:

Aluminum with hard anodized surface treatment.

Aluminum with Ceraflex (CFX) surface treatment.

Other:

ATEX applications.