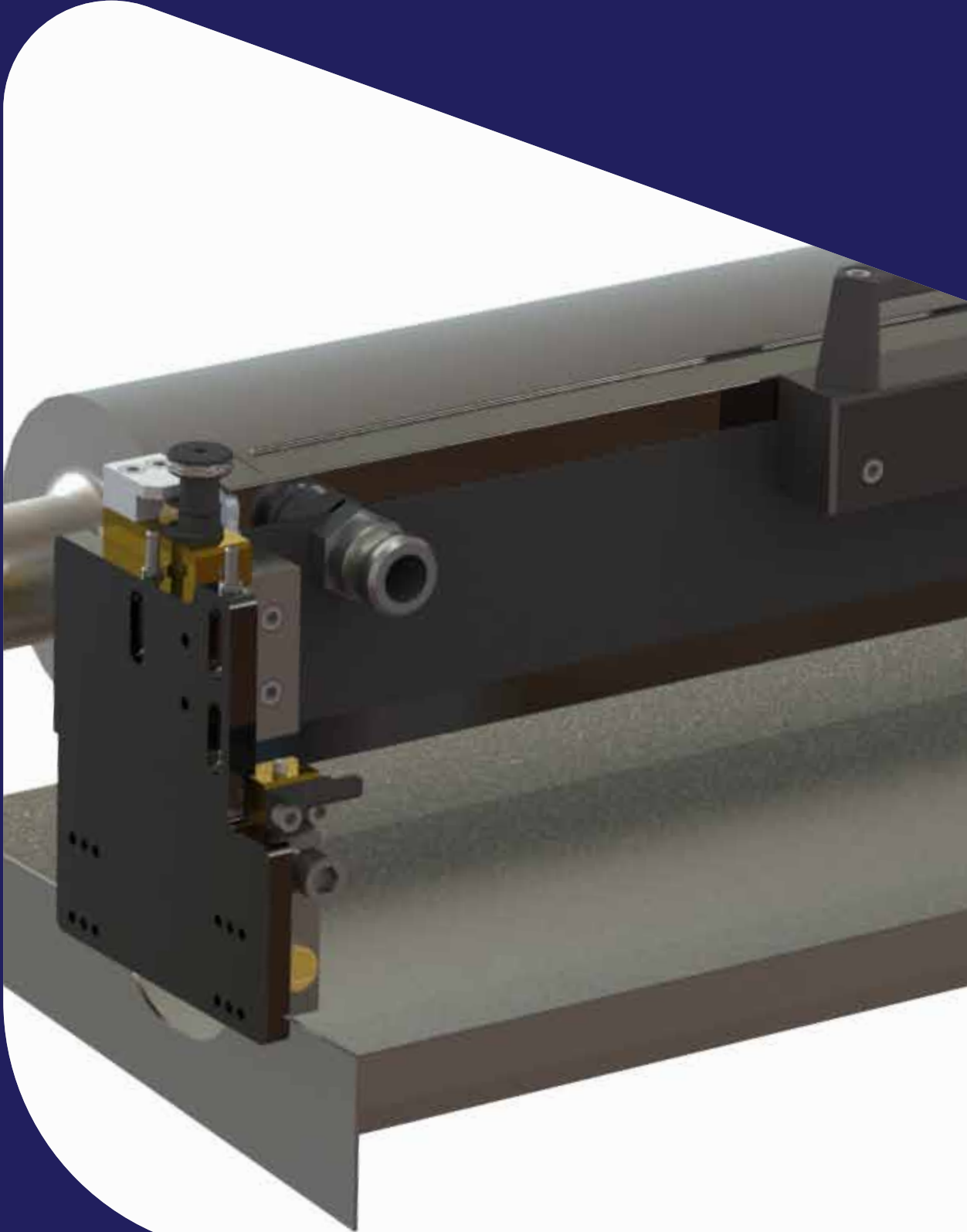


TRESU FlexiPrint

Chamber doctor blade system



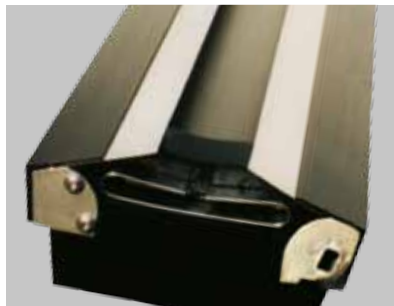


TRESU FlexiPrint

Chamber doctor blade systems

The TRESU FlexiPrint delivers a standardized, compact construction with excellent price/performance ratio

- Mechanical loading system
- Patented TRESU E-Line clamping system for fast doctor blade change
- Patented TRESU seals guaranteeing authentic quality
- High quality doctoring for perfect printing
- For water-, UV- and solvent based ink and coatings



Easy lock/unlock

E-Line
Excentric,
quick clamping
solution

Patented TRESU
seals ensure
perfect sealing

Technical Specifications

Profile	D1 – D4
Anilox Ø	60 - 250 mm
Anilox width	Up to 2000 mm
Speed	Up to 350 m/min
Clamping	E-Line quick change (option: S-Line)
Circulation	Siphone or knee outlet
Inks/coatings	Water-, UV- or solvent based



The Best Part of Innovation

TRESU Group

14-16, Eegsvej
DK-6091 Bjert
Tel: +45 76 32 35 00
Fax: +45 76 32 35 10
tresu@tresu.com
www.tresu.com